

Identifying Plants

Today we will be...

Identifying the different parts of plants.

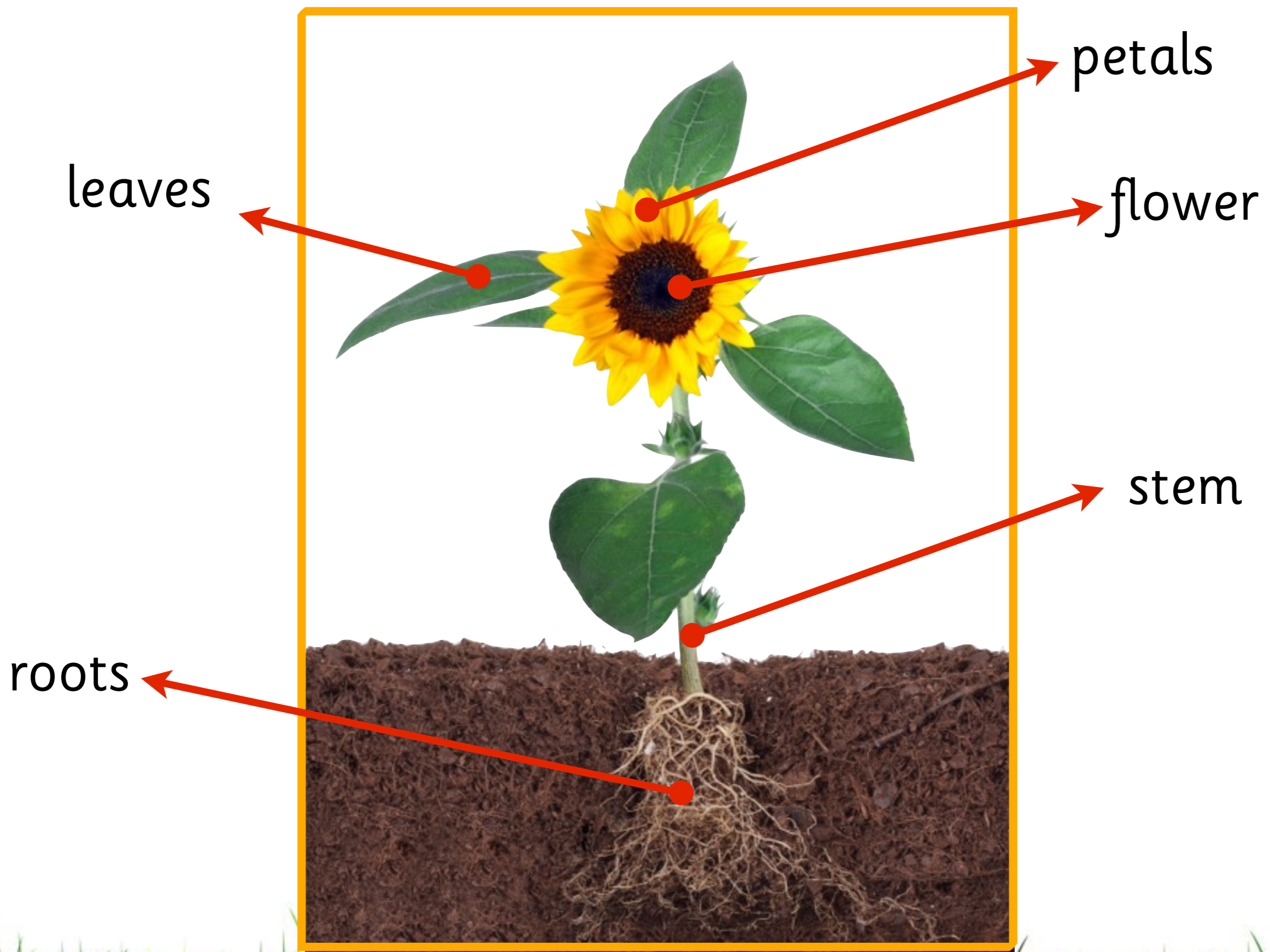


Plants are made up of lots of different parts. Each part of the plant has its own special purpose.

How many different parts of this plant can you name?

Think, pair, share your ideas.



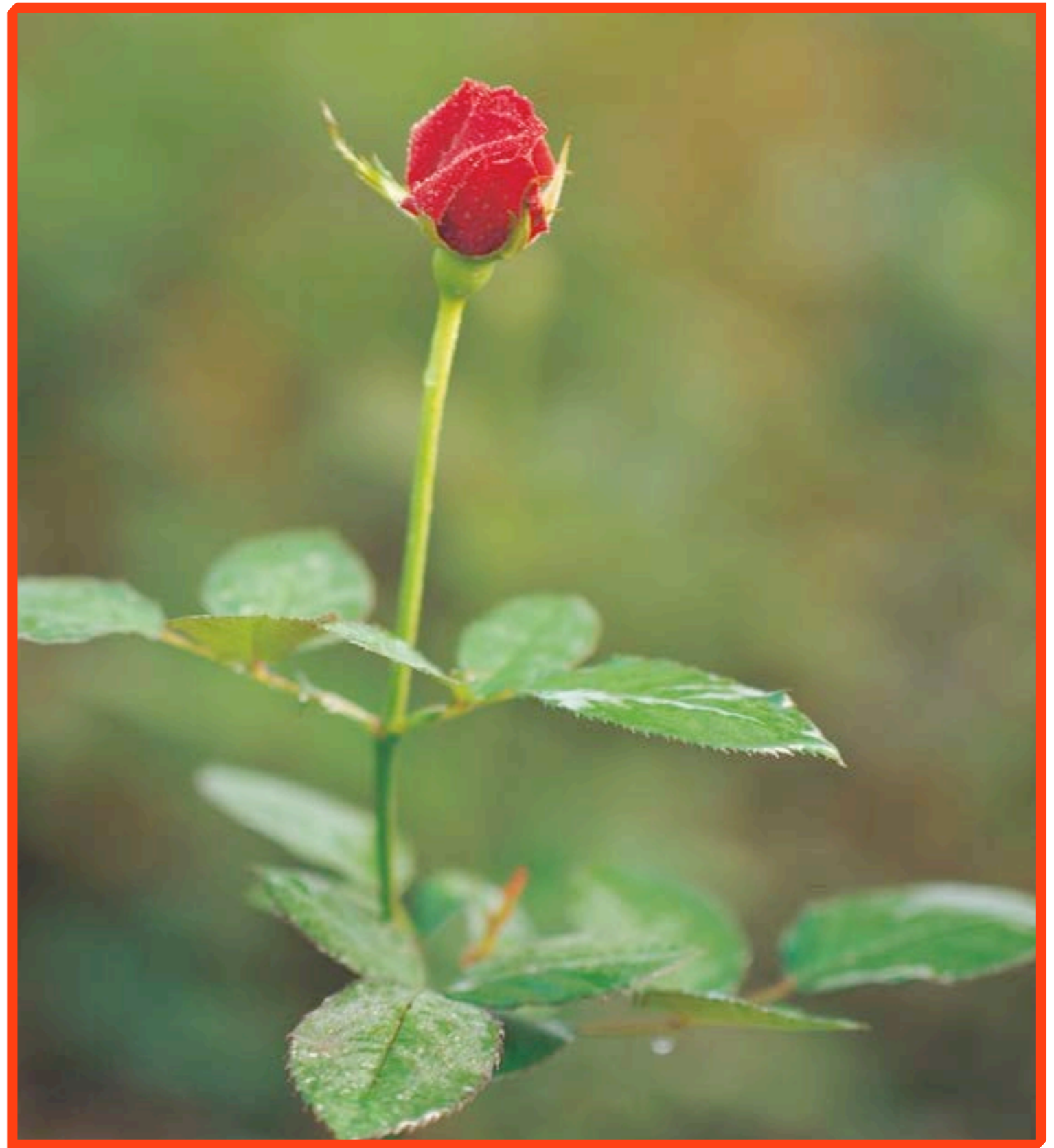


This plant is part
of a rose bush.

Can you point to
the stem?

Can you point to
the flower?

Can you point to
the leaves?





This plant is part
of a lily.

Can you point to
the stem?

Can you point to
the flower?

Can you point to
the leaves?

This plant is a
daffodil.

Can you point to
the stem?

Can you point to
the flower?

Can you point to
the leaves?



This plant is a new seedling that has just started to grow out of the ground.



Can you point to the stem?

Can you point to the leaves?

Can you point to the roots?

All these plants have roots. We cannot see them because they are under the ground.

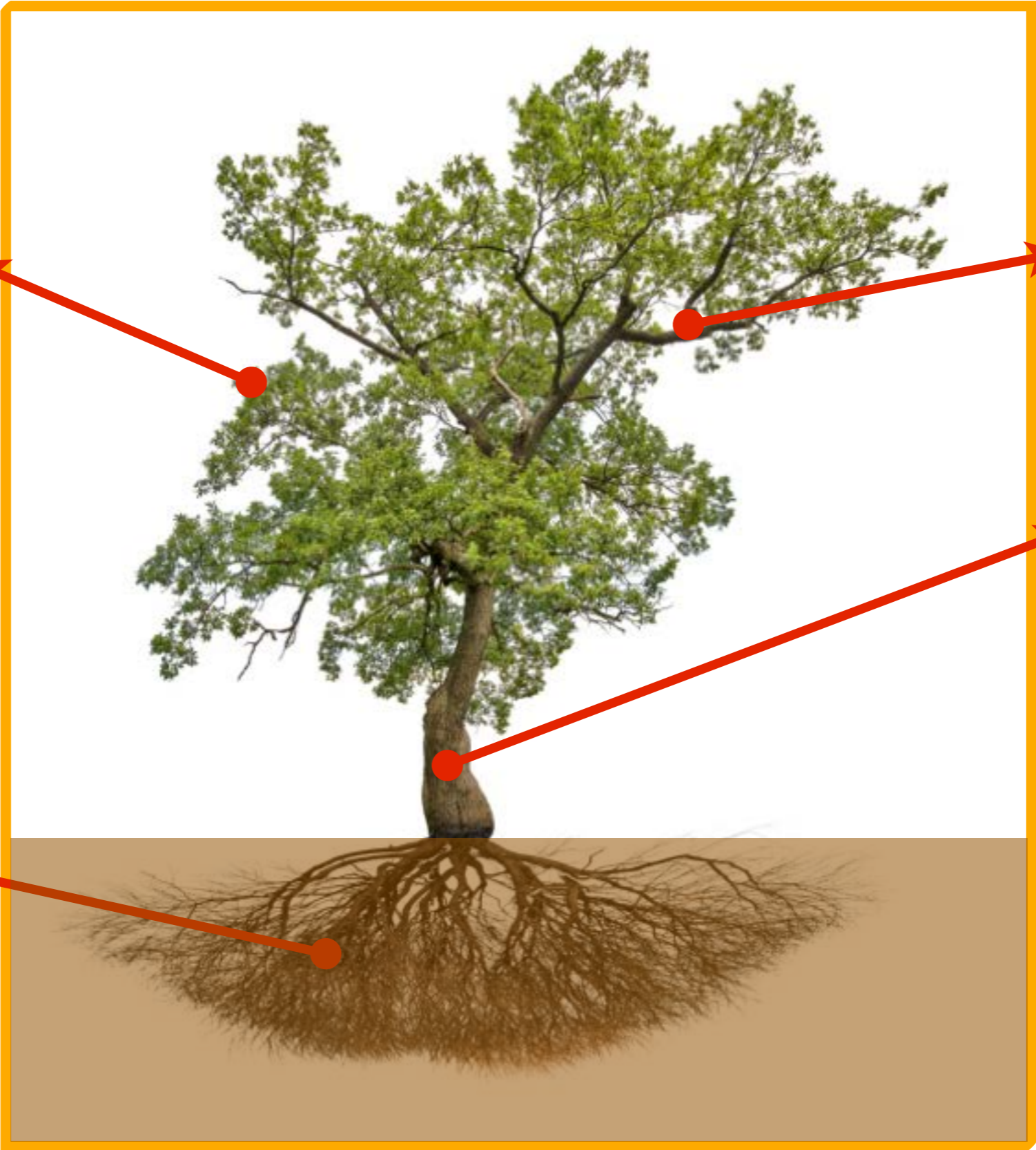


Trees are a type of plant.
They also have different
parts that are used for
different things.

How many different
parts of this tree can
you name?

Think, pair, share
your ideas.





leaves

branches

trunk

roots

The flowers on a tree are called blossom.

What do you think the roots of this tree look like?



The roots stop the tree from falling over. They anchor it.

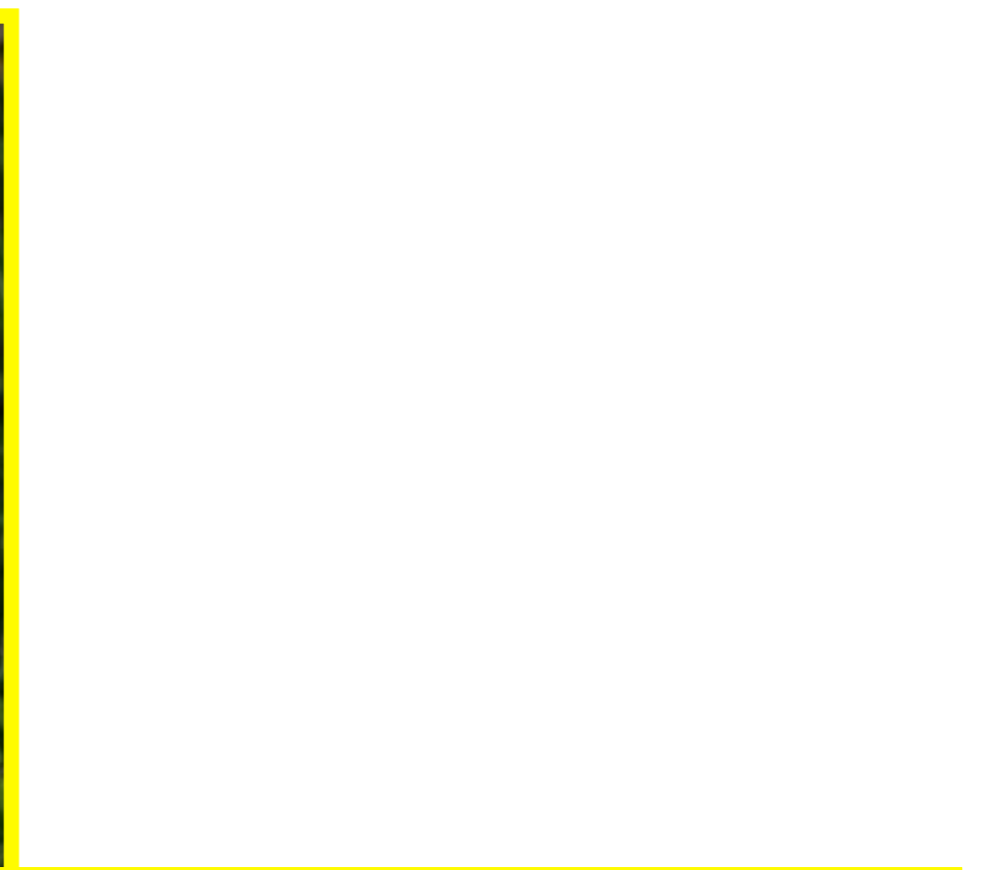
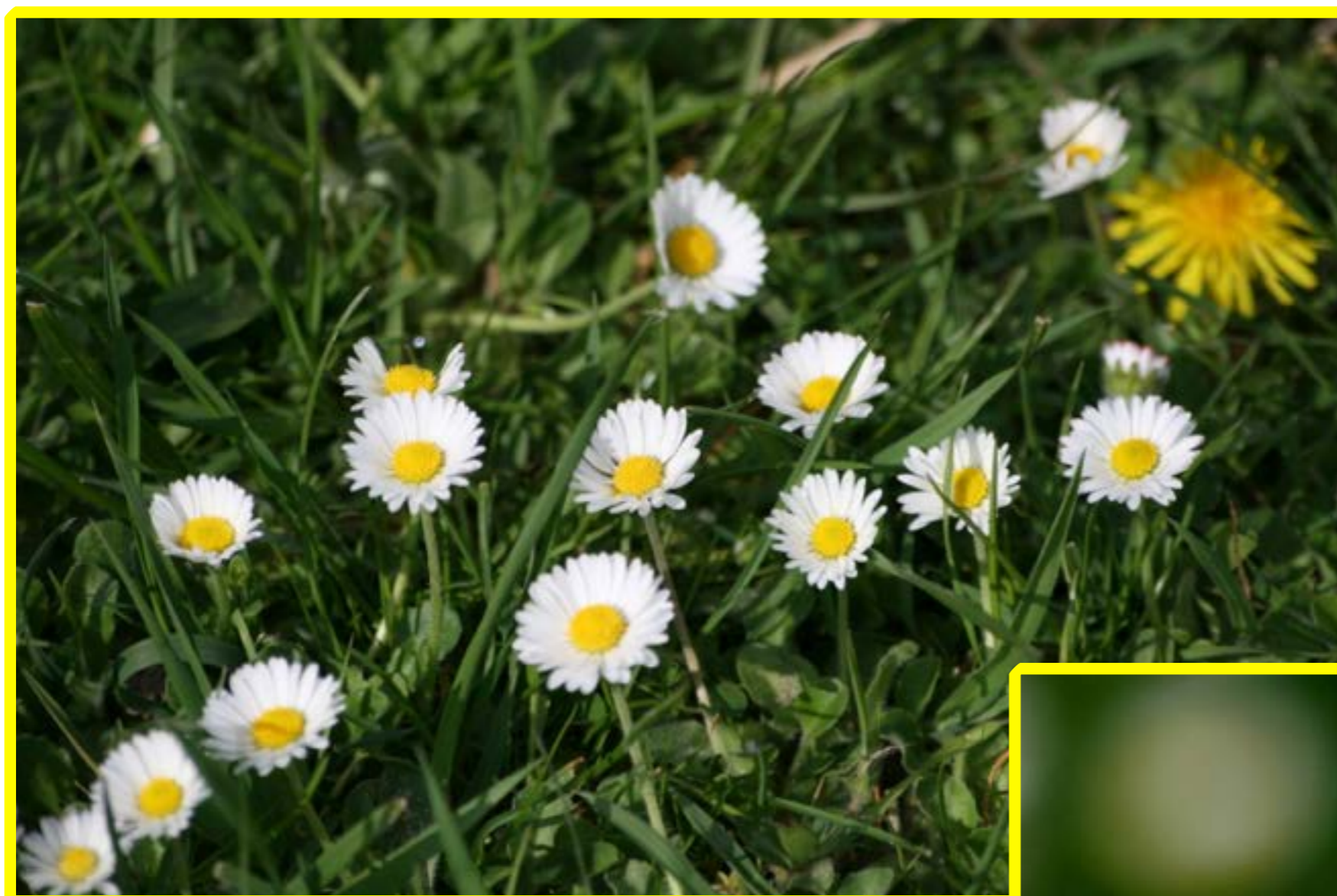
The tree uses its roots to collect water.

How would the roots of these plants be different?



What plant do you think this flower belongs to? Why?

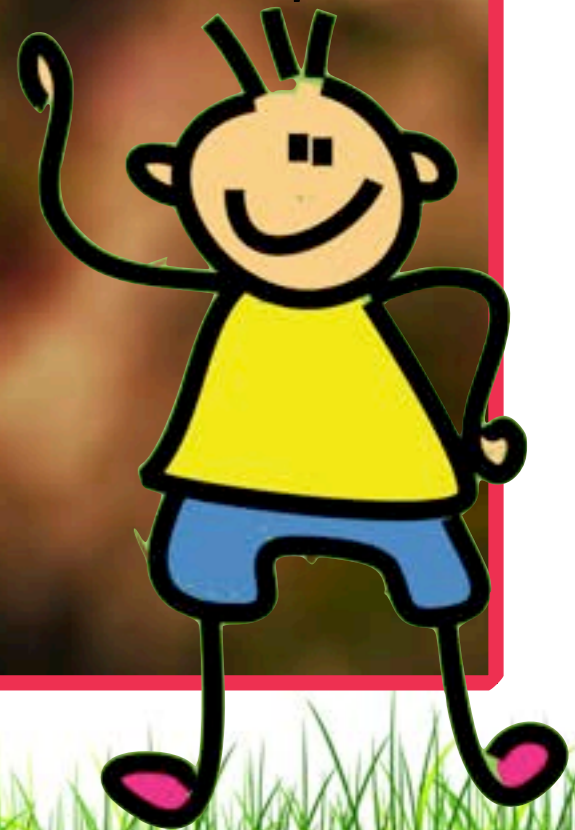




It was a daisy.



What plant do you think these flowers belong to? Why?





They are blossom from an apple tree.



What plant do you think these flowers belong to? Why?





They are daffodils.

