

# Seasonal Changes

## Today we will be...

Finding out how humans are affected by the seasons.



# Spring

March

April

May



# Summer

June

July

August



# Autumn

September

October

November



# Winter

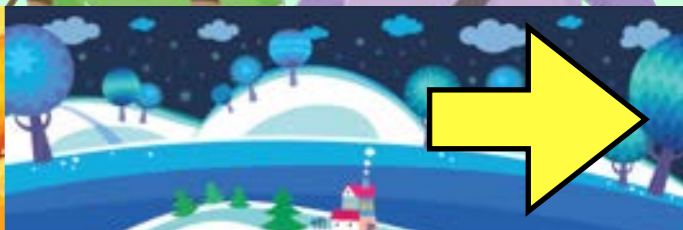
December

January

February



How does the weather change for each season?

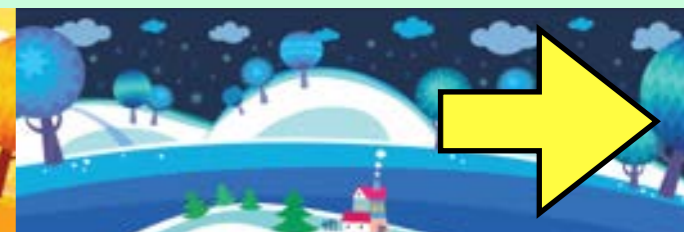




The weather isn't the only thing to change with the seasons. The amount of daylight changes as well.

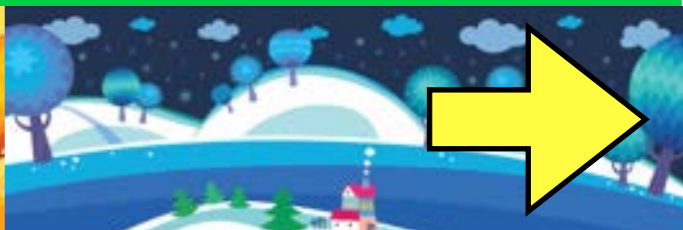


We still have 24 hours in a day but the time the sun rises and sets changes.

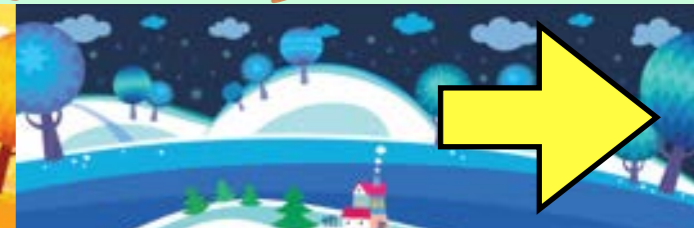




Daytime is when the sun makes it light outside. It is still daytime when it is light, even if you can't see the sun because it is cloudy.

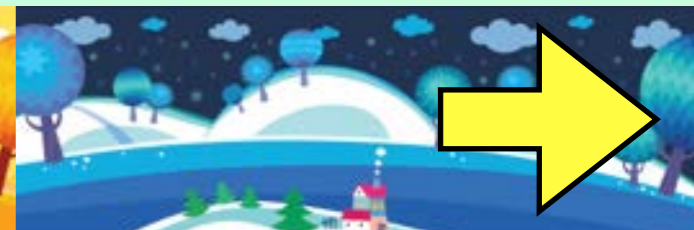


It is nighttime when the sun sets until it rises. During the night it is dark. Street lights and other lights are used to brighten up areas so we can see where we are going.



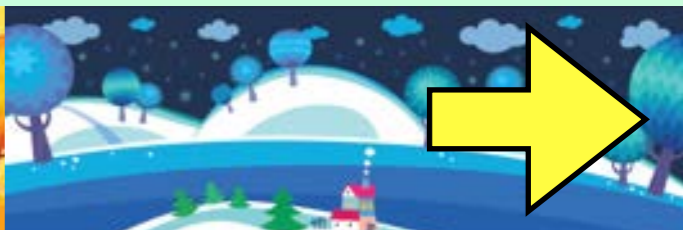


In the summer the sun rises earlier and sets later than in the winter. This means there are more hours of sunlight in the summer.



One of us has a birthday in the summer, one of us has a birthday in the winter.

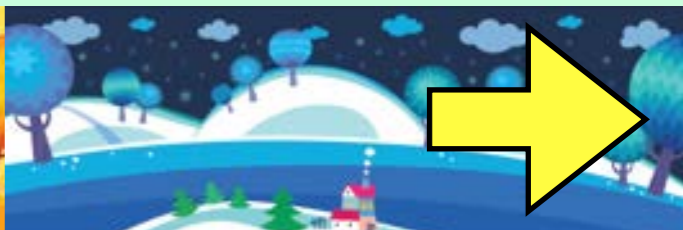
Can you work out whose birthday is in the summer and whose is in the winter?



Here is a picture of us on our birthday mornings.  
We both got up at 7am.

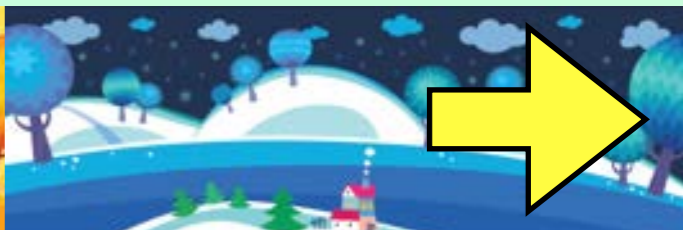


Here is a picture of us at our birthday parties.  
Both of the photos were taken at 6pm.



Have you worked out whose birthday is in the summer and whose is in the winter?

Did you use how light it was to help you?



My birthday is in the winter. It was dark when I got out of bed because the sun did not rise until 8am. It was dark during my party because the sun had set at 4pm.



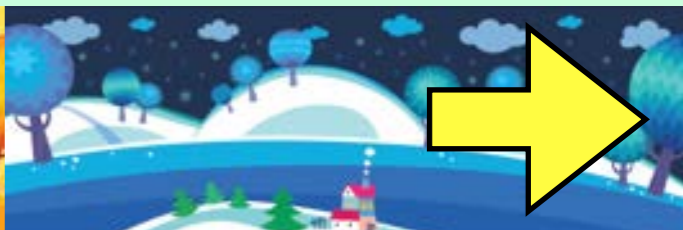
## Winter



December

January

February





My birthday is in the summer. It was light when I got out of bed because the sun rose at 5am. It was light during my party because the sun did not set until 9pm.

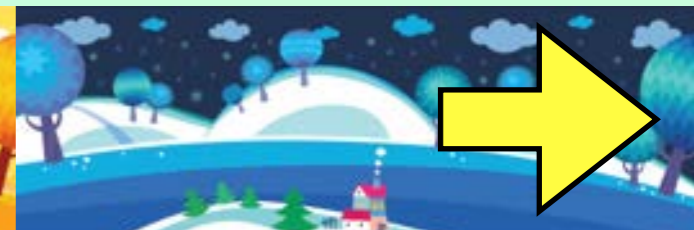
## Summer



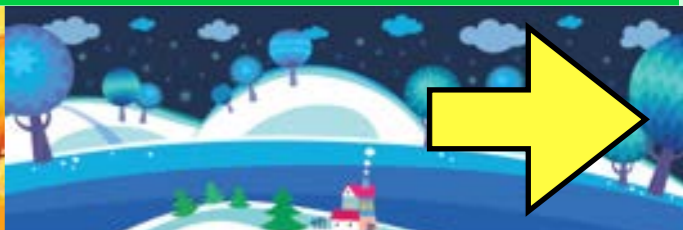
June

July

August

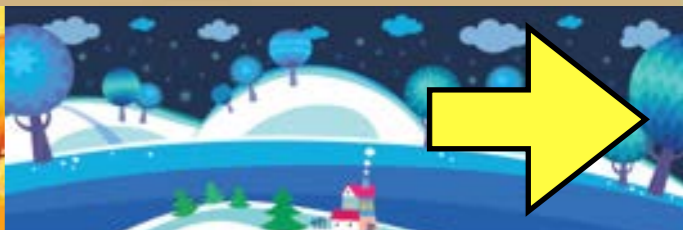


Was it light or dark when you woke up this morning?

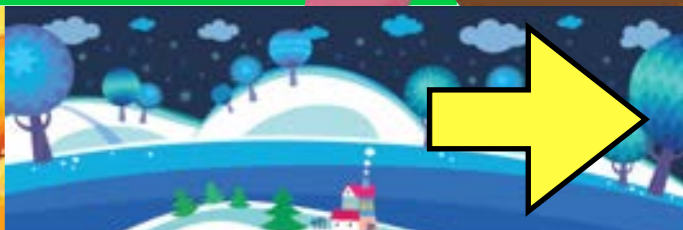




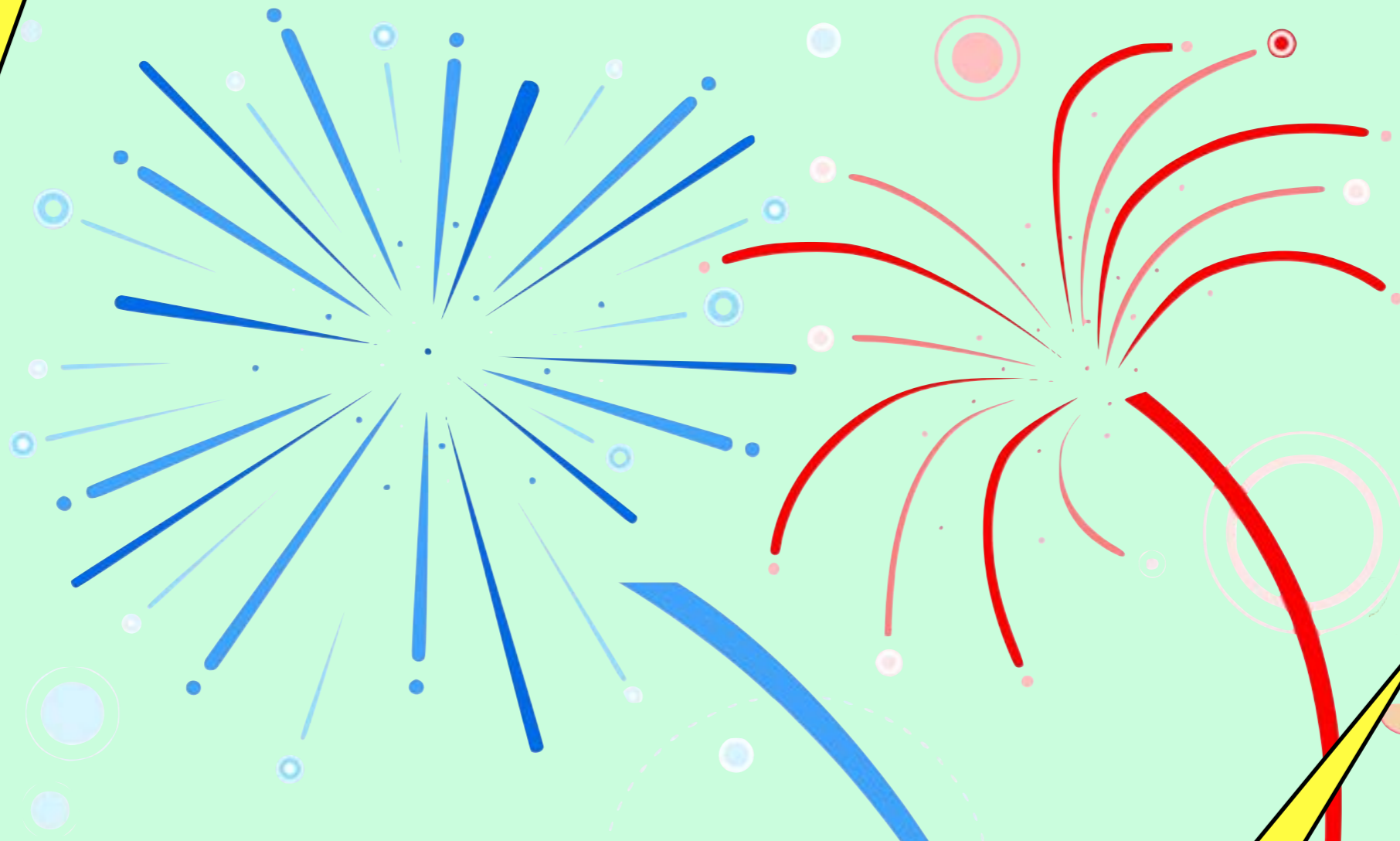
Was it light or dark when you travelled to school this morning?



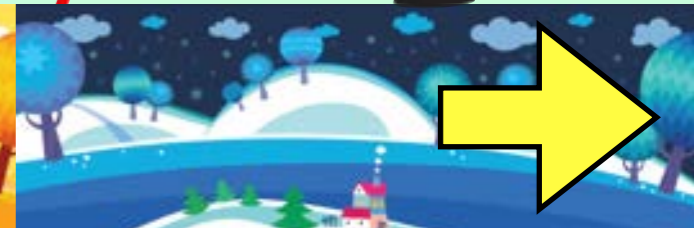
Was it light or dark when you went to bed last night?



At my next birthday I would like to have fireworks. My party will be at 5pm in the summer.

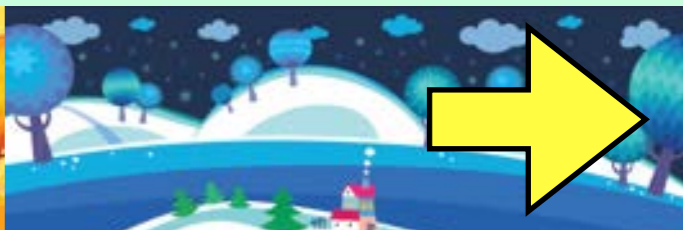


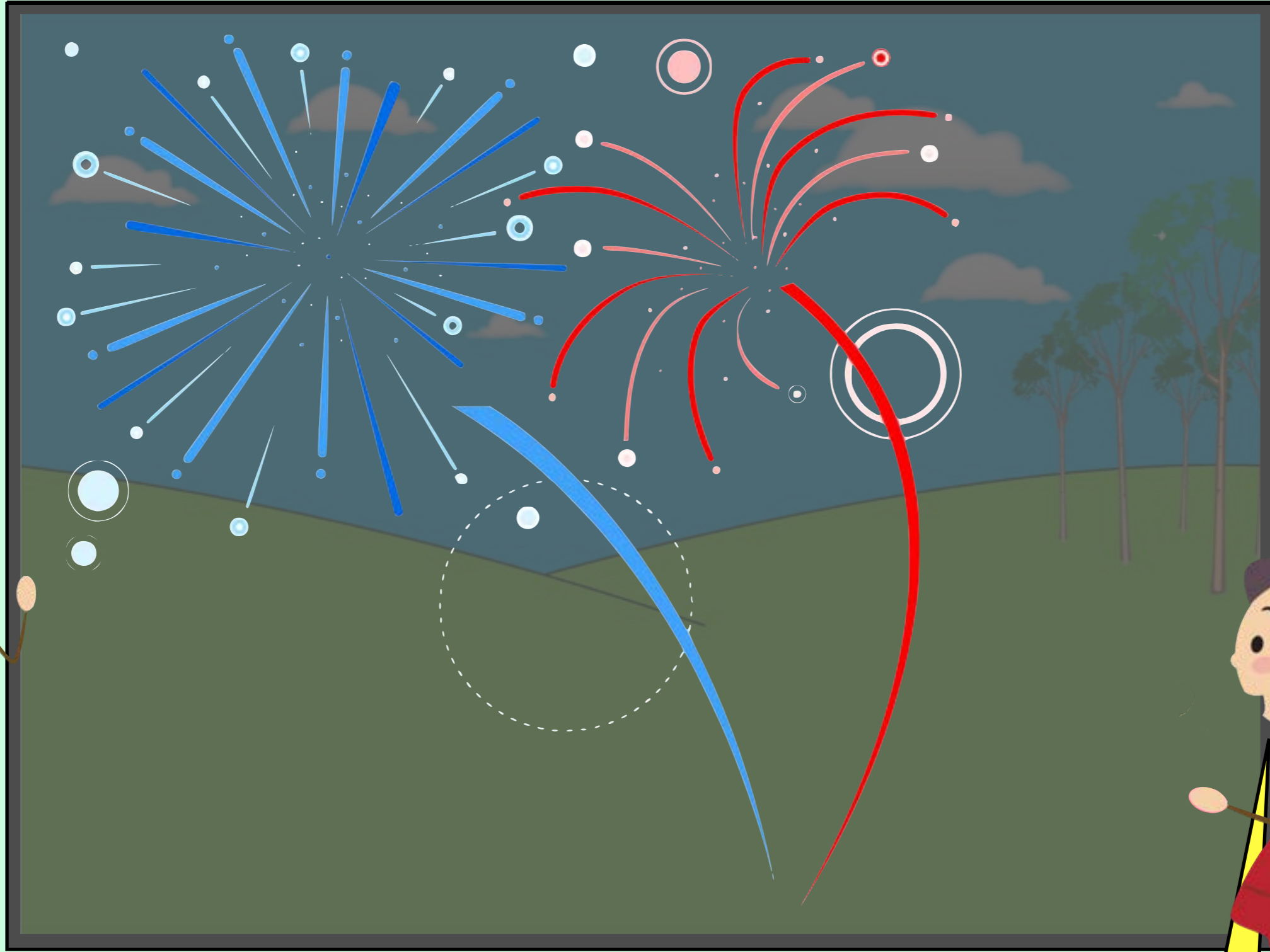
I think it would be better to have the fireworks at my party. Who is right?





At 5pm in the summer it would still be light. This means we would not be able to see the fireworks!





At 5pm in the winter it would be dark. This means we would be able to see the fireworks!

